

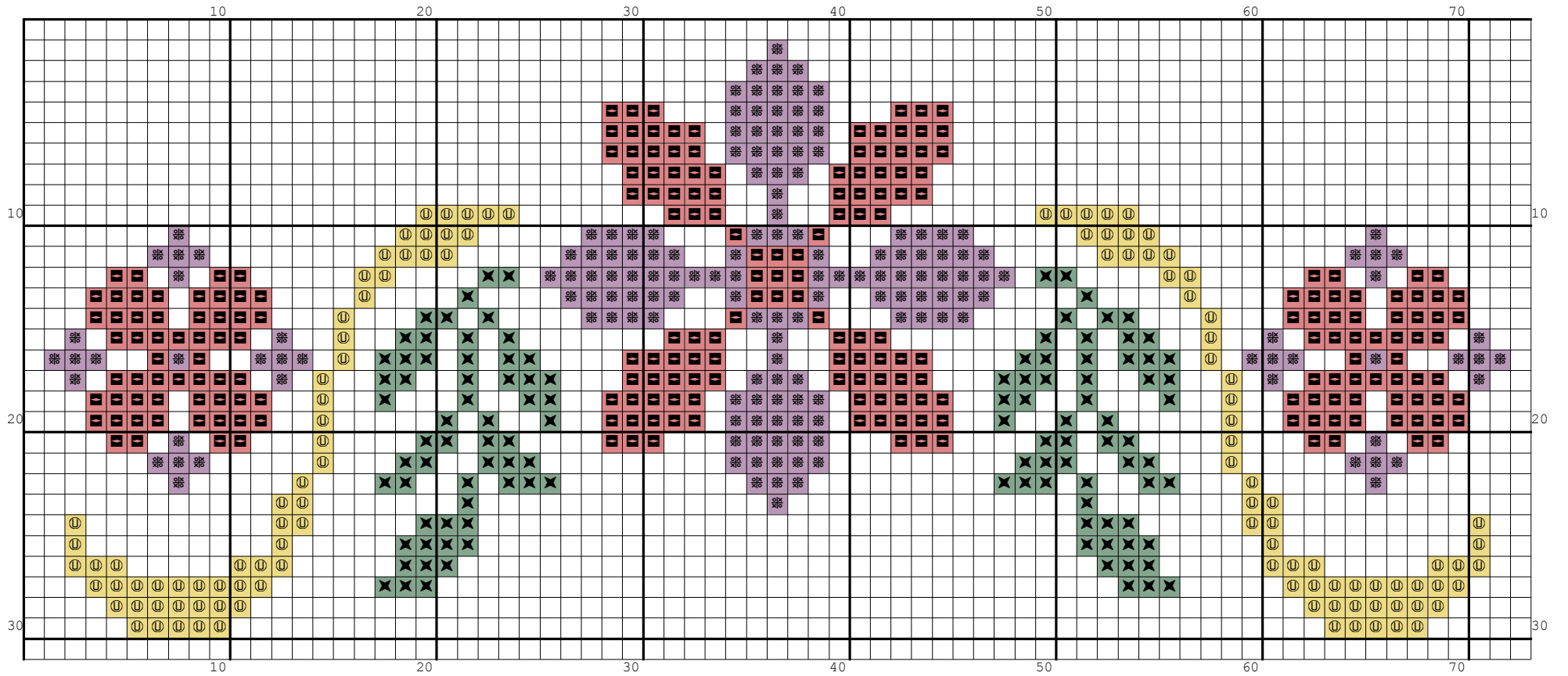
Nazwa: Wzór oparty na motywach lubelskich
Autor: look4me

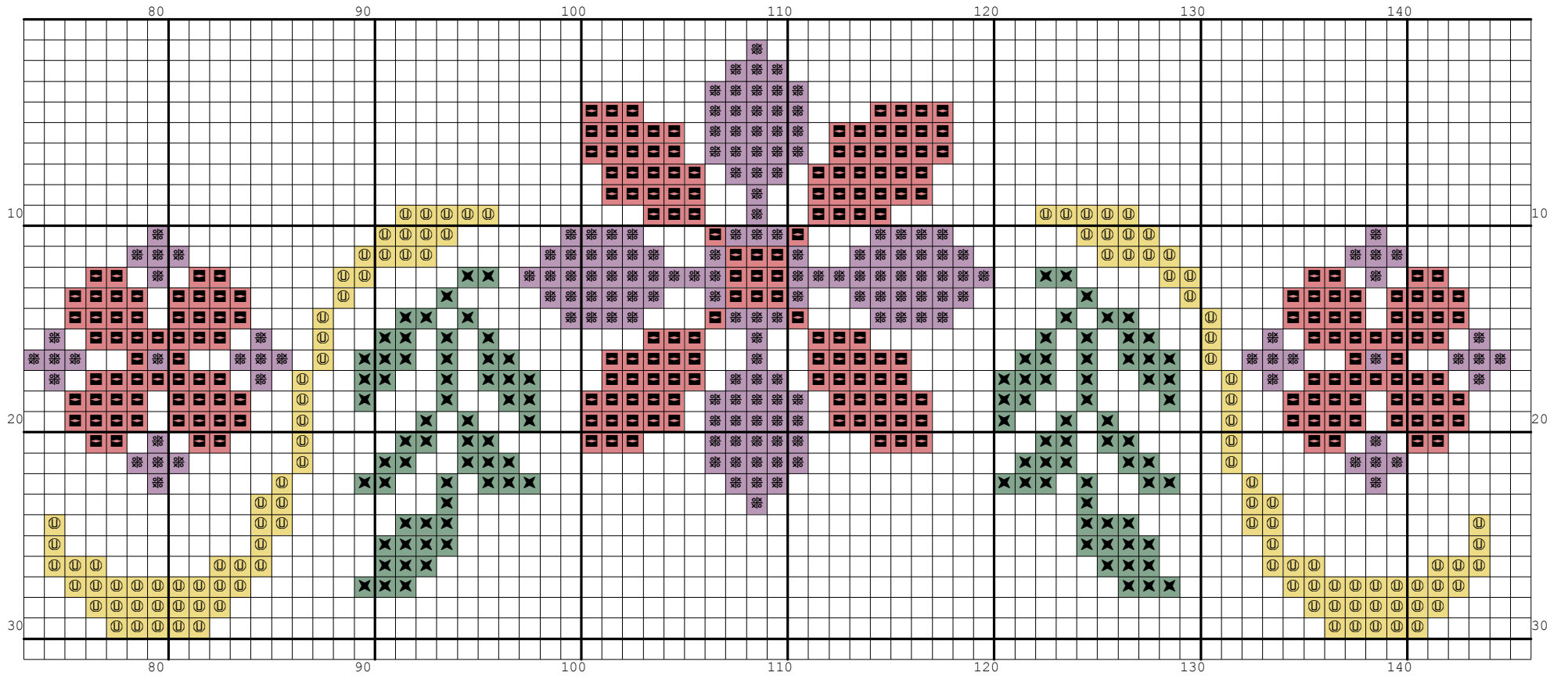
Rozmiar: 146x31
Kolorów: 5





(PL): Jeżeli użyjesz tego wzoru, będziesz zadowolona/y z efektu i uznasz za stosowne wspomóc rozwój witryny www.wzory-haftu.pl możesz wpłacić dowolną kwotę na konto podane w dziale "Kontakt" na wspomnianej stronie.

(EN): If after using this pattern you are happy with the effect and you think that it is worth to support the development of www.cross-stitch-patterns.eu website, feel free to donate any amount to the bank account given in the "Contact" section on the abovementioned site.







| Symbol | Nr nici | Krzyżyki | Motki 2 nitki | Motki 3 nitki | Motki 6 nitki |
|---|---------|----------|------------------|------------------|------------------|
|  | Kanwa | 3254 | 2 | 2 | 4 |
|  | DMC 208 | 340 | 1 | 1 | 1 |
|  | DMC 666 | 464 | 1 | 1 | 1 |
|  | DMC 701 | 232 | 1 | 1 | 1 |
|  | DMC 726 | 236 | 1 | 1 | 1 |