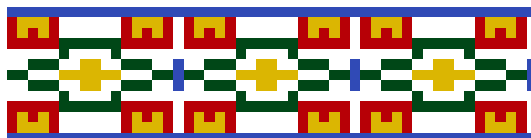


Nazwa: Wzór oparty na motywach lubelskich  
Autor: look4me






Rozmiar: 51x13  
Kolorów: 5

(PL): Jeżeli użyjesz tego wzoru, będziesz zadowolona/y z efektu i uznasz za stosowne wspomóc rozwój witryny [www.wzory-haftu.pl](http://www.wzory-haftu.pl) możesz wpłacić dowolną kwotę na konto podane w dziale "Kontakt" na wspomnianej stronie.

(EN): If after using this pattern you are happy with the effect and you think that it is worth to support the development of [www.cross-stitch-patterns.eu](http://www.cross-stitch-patterns.eu) website, feel free to donate any amount to the bank account given in the "Contact" section on the abovementioned site.





Symbol	Nr nici	Krzyżyki	Motki 2 nitki	Motki 3 nitki	Motki 6 nitek
	Kanwa	246	1	1	1
	DMC 666	120	1	1	1
	DMC 701	96	1	1	1
	DMC 726	90	1	1	1
	DMC 3843	111	1	1	1